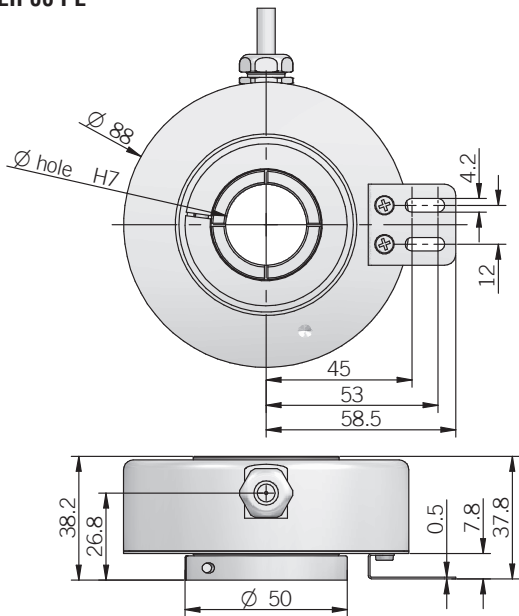


EH 88 PE



dimensions in mm

ELECTRICAL SPECIFICATIONS

Resolution	from 500 to 2500 ppr
Power supply	5 = 4,5 ... 5,5 V DC 5/28 = 4,75 ... 29,4 V DC 8/24 = 7,6 ... 25,2 V DC (reverse polarity protection)
Power draw without load	800 mW
Max load current	20 mA / channel
Output type*	push-pull / line driver
Max output frequency	105 kHz
Counting direction	A leads B clockwise (shaft view)
Electromagnetic compatibility	IEC 61000-6-2 IEC 61000-6-3

*output levels according to power supply, for further details please see under Technical basics section

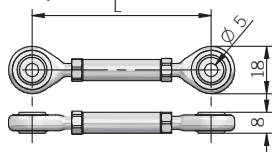
RESOLUTIONS

500 - 512 - 720 - **1000** - **1024** - 1440 - 2500

please directly contact our offices for other pulses, preferred resolutions in bold

ACCESSORIES

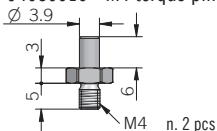
Torque arm (mod. PET)



n. 2 M5 x 12 UNI ISO 7380 included

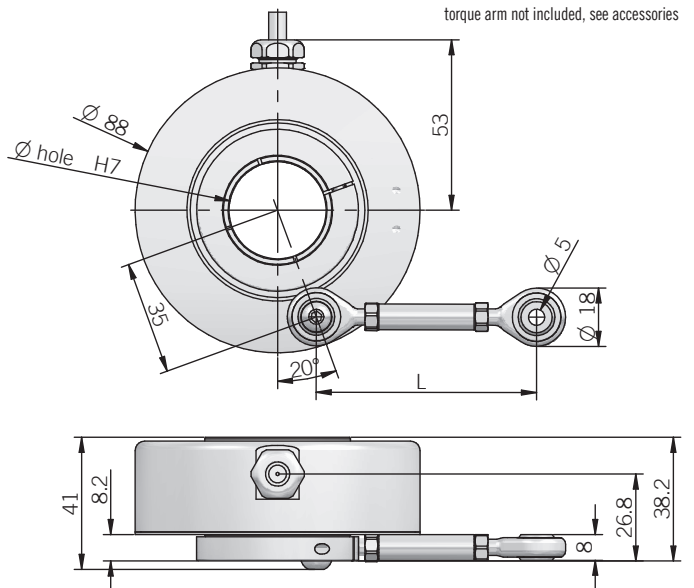
Length	Ordering code
L = 80 ± 10mm	SN5A30 (P/N 94010061)
L = 110 ± 10mm	SN5A60 (P/N 94010070)
L = 140 ± 10mm	SN5A90 (P/N 94010071)

94080010 - M4 torque pin kit (mod. PE)



n. 2 pcs

EH 88 PET



MECHANICAL SPECIFICATIONS

Bore diameter	ø 25 / 30 / 35 / 38 / 40 mm
Enclosure rating	IP 54 (IEC 60529)
Max rotation speed	3000 rpm
Shock	50 G, 11 ms (IEC 60068-2-27)
Vibration	10 G, 10 ... 2000 Hz (IEC 60068-2-6)
Moment of inertia	45 x 10 ⁻⁶ kgm ²
Starting torque (at +20°C / +68°F)	< 0,02 Nm
Body material	EN-AW 2011 aluminum
Shaft material	up to ø 38 mm: EN-AW 2011 aluminum ø 40 mm: 1.4305/AISI 303 stainless steel
Housing material	EN-AW 2011 aluminum
Bearings	2 ball bearings
Bearings life	10 ⁹ revolutions
Operating temperature	-30° ... +85°C (-22° ... +185°F)
Storage temperature	-30° ... +85°C (-22° ... +185°F)
Fixing torque for collar clamping	1 Nm recommended
Weight	350 g (12,35 oz)

CONNECTIONS

Function	Cable output push-pull	Cable output Line driver
+V DC	red	red
0 V	black	black
Ch. A	green	green
Ch. A-	/	brown
Ch. B	yellow	yellow
Ch. B-	/	orange
Ch. Z	blue	blue
Ch. Z-	/	white
⏏	shield	shield